

Al-Qasim Green University

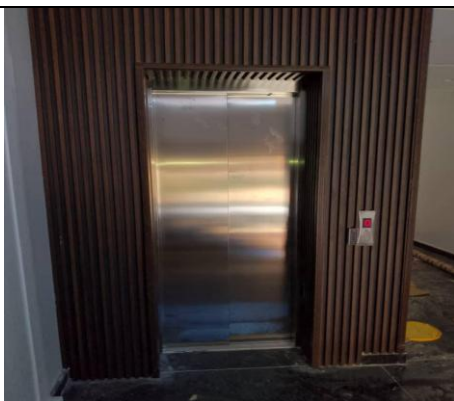
Support Services for Disabled People



1. Designated disabled parking spaces for disabled people close to the entrance with enough space for wheelchair.



2. Accessible toilet for disabled people and pregnant women.



3. Elevators to help disabled people and pregnant women.

Al-Qasim Green University

Support Services for Disabled People



Description:

The overall goal of Al-Qasim Green University is to establish a fair, accessible, and inclusive learning environment for people with disabilities, which includes the following essential components:

1. **Accessibility:** Making certain that all campus resources, facilities, and online platforms are usable by individuals with a variety of disabilities, including those that are cognitive, psychological, sensory, or physical.
2. **Promoting inclusive teaching methods and curriculum design** that take into account a range of learning requirements, together with resources and formats that can be modified to accommodate various disability kinds, is known as inclusive education.
3. **Support Services:** Offering specialized support services, such as mental health services, disability resource centers, academic accommodations (such extra time for tests, help taking notes, or easily accessed learning resources), and assistive technology.
4. **Awareness and Training:** Promoting an inclusive and diverse campus culture through frequent training for students, professors, and staff on inclusion, disability rights, and the best ways to serve students with disabilities.
5. **Research, workshops, and courses:** It is important to comprehend the particular needs of disabled people in the target setting before putting any particular facilities into place. This entails promoting research in this area, conducting workshops, courses, and surveys with disabled individuals and expectant moms to learn about their experiences, as well as identifying facilities' requirements.
6. **Equal Opportunity:** Make sure that students with disabilities have the same chances as their peers to succeed academically, participate in extracurricular activities, get internships, and advance in their careers.
7. **Cooperation:** To address new needs and enhance its support networks, the university collaborates extensively with outside specialized organizations to support students with disabilities.